

Toyota Avensis Sedan & Wagon 11/2008-

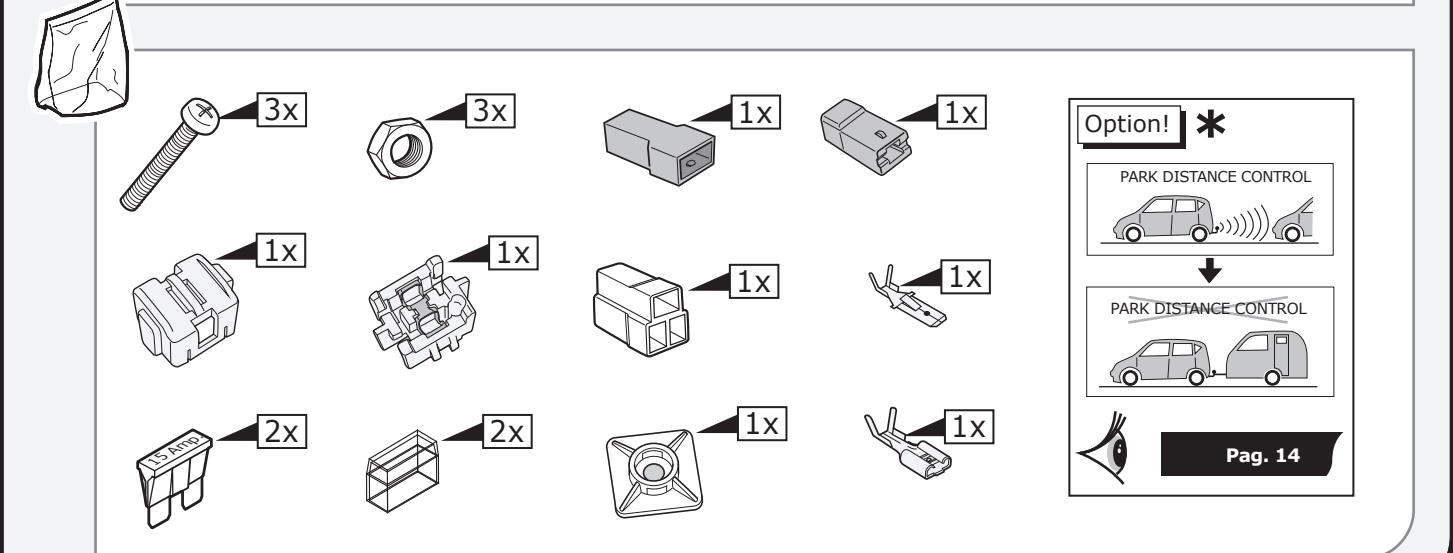
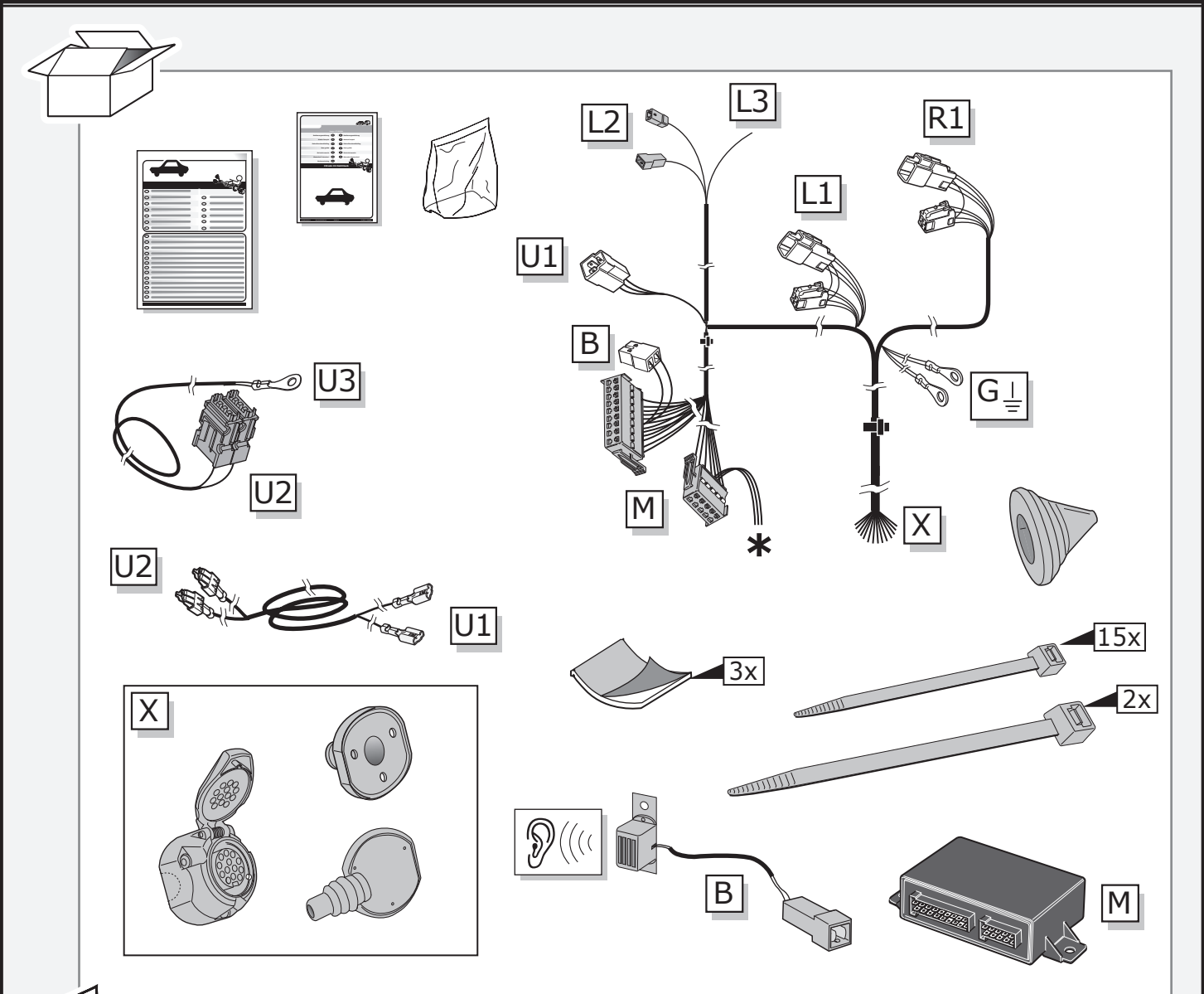
Partnr.: TO-148-DHU

- Fitting instructions electric wiring kit tow bar with 13-P socket up to DIN/ISO Norm 11446.
- We would expressly point out that assembly not carried out properly by a competent installer will result in cancellation of any right to damage compensation, in particular those arising by virtue of the product liability act.
- Contents of these kits and their fitting manuals are subject to alteration without notice, please ensure that these instructions are read and fully understood before commencing installation.
- Do not overload circuits; the maximum loads per connection are detailed in this manual.
- Attention! Before Installation, please read this manual carefully and inform your customer to consult the vehicle owners manual to check for any vehicle modifications required before towing.
- In the event of functional problems, troubleshooting must be limited to about 0.5 hours, contact the installers support: customercare@ecs-electronics.com / 00800 22 55 23 27.

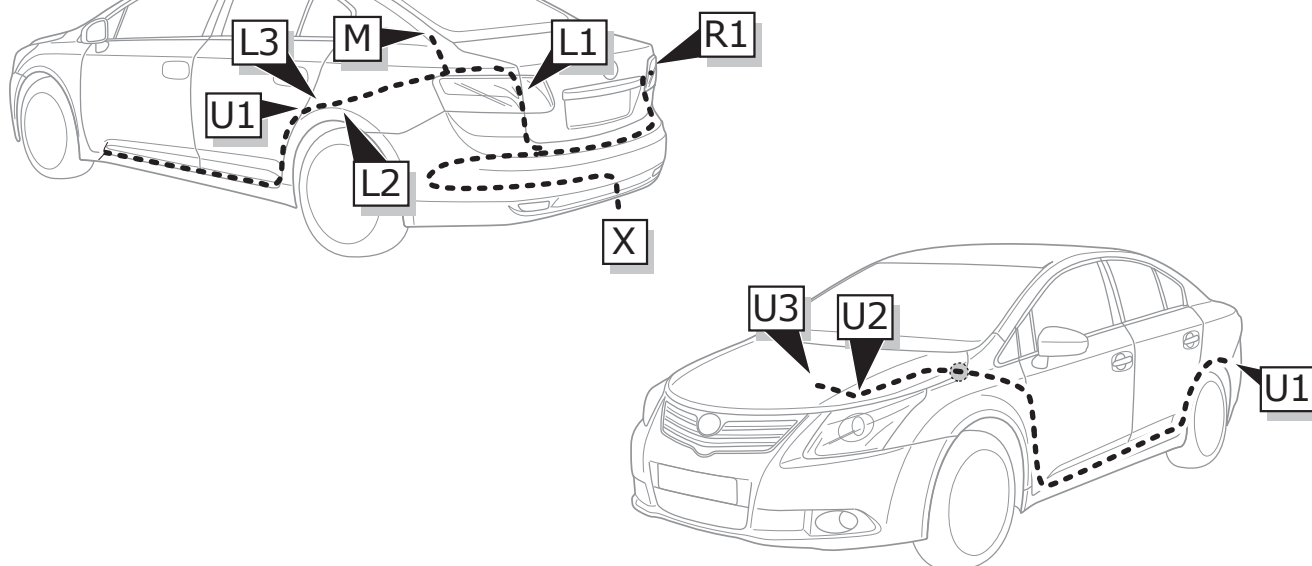


**00800
22 55 23 27
CALL2ECS**
Monday - Friday
08.00am - 11.00am
12.00am - 05.00pm GMT
customercare@ecs-electronics.com
www.ecs-electronicsuk.co.uk

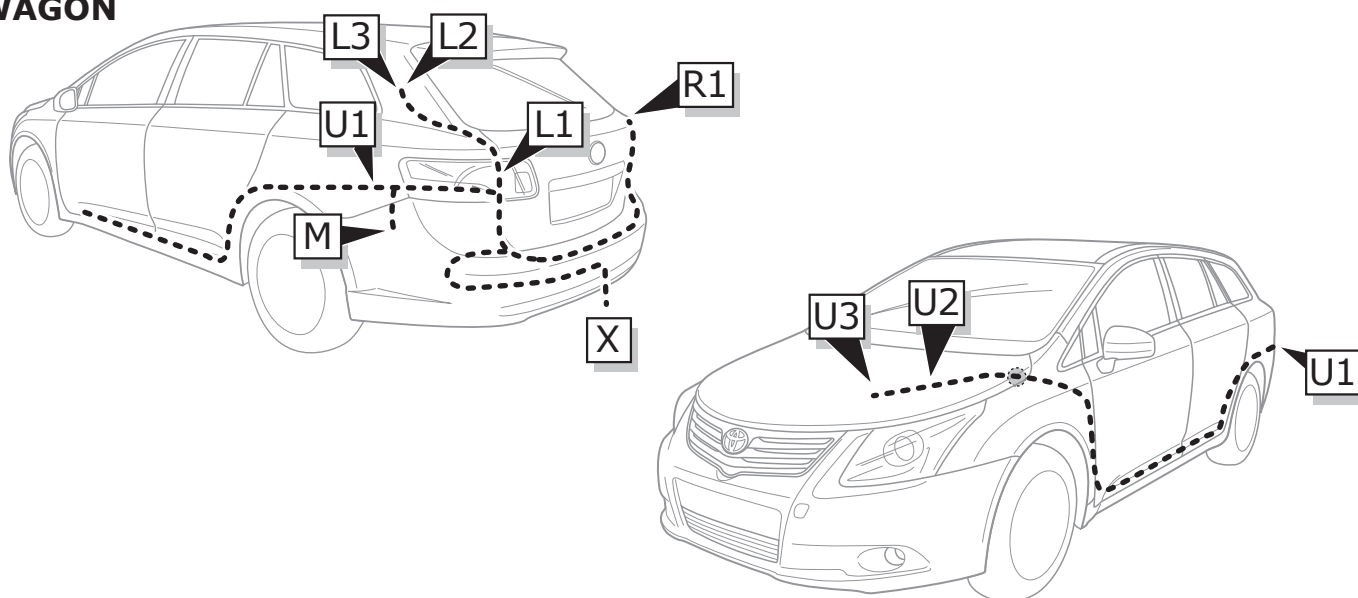
Part list



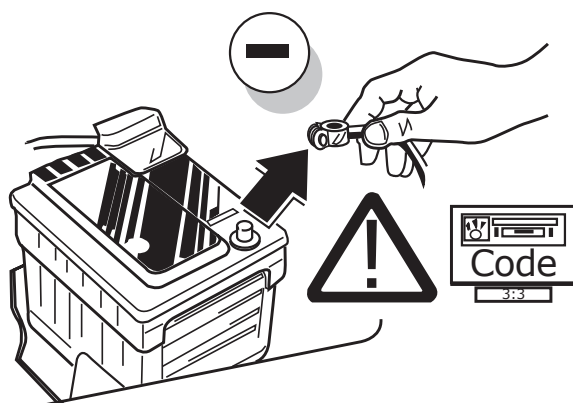
SEDAN



WAGON

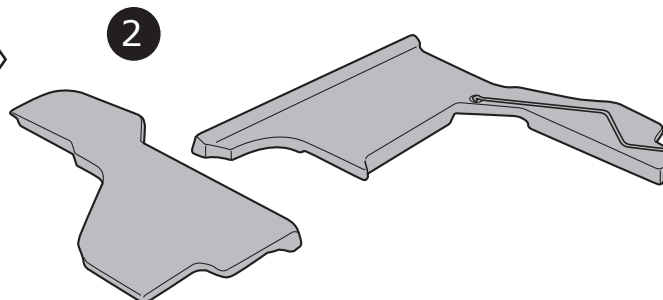
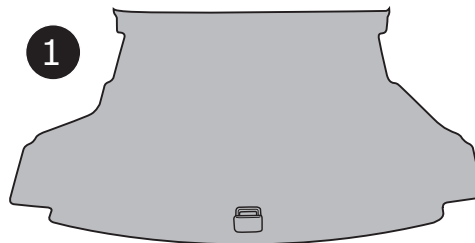
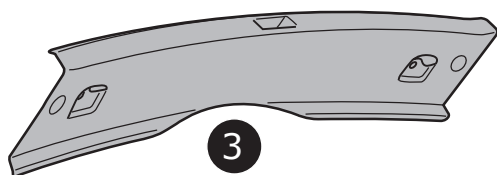
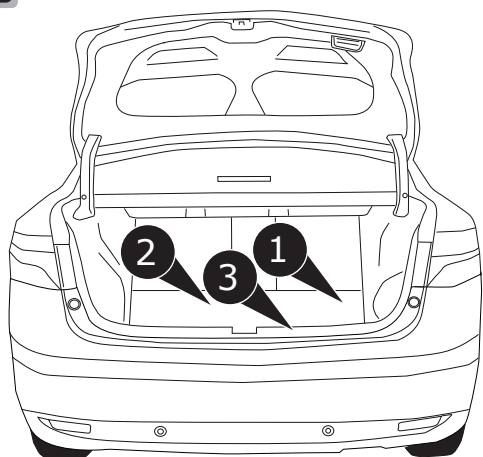


1



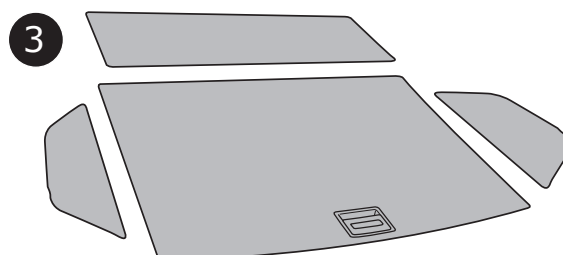
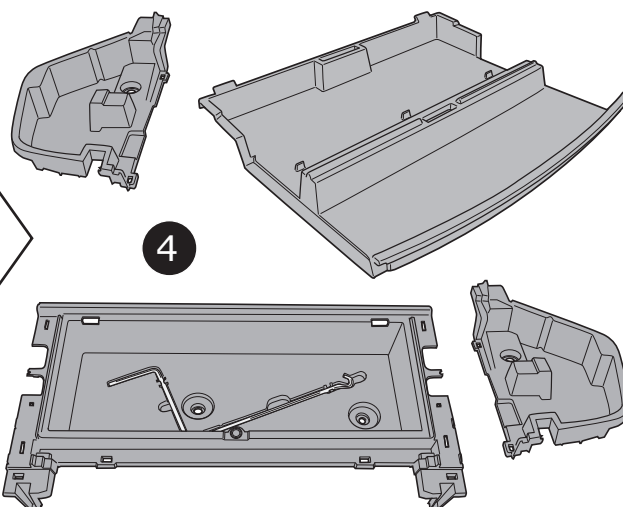
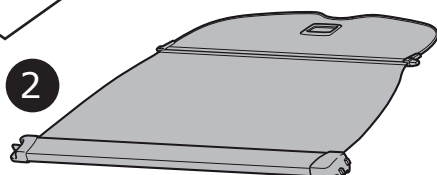
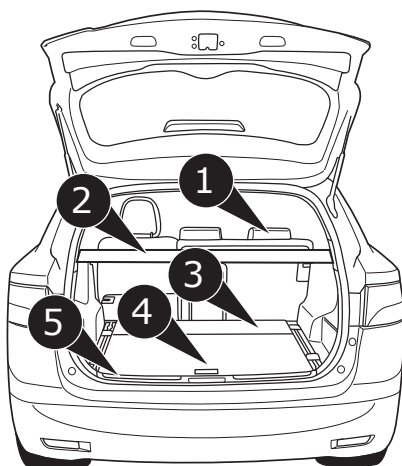
SEDAN

2



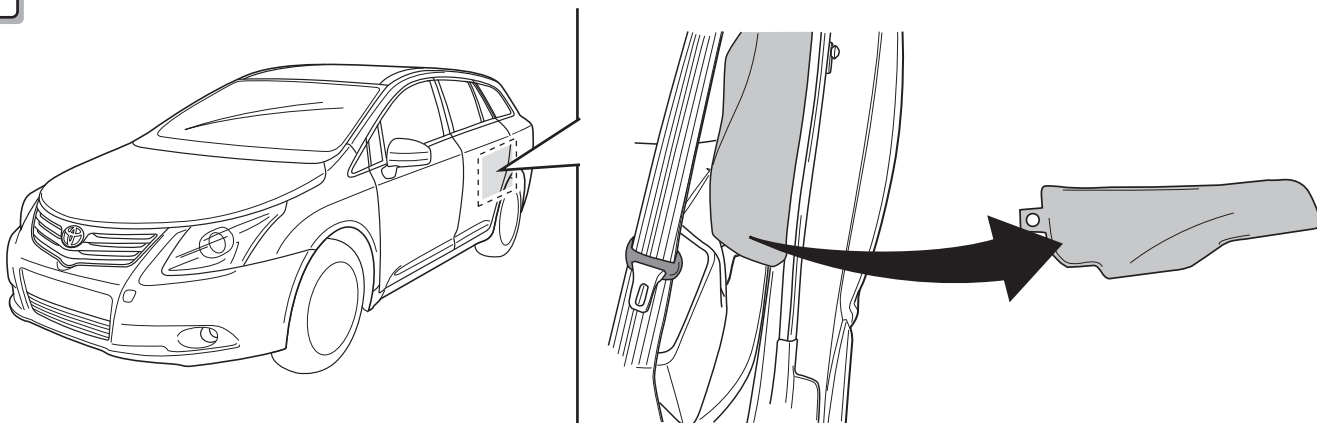
WAGON

3



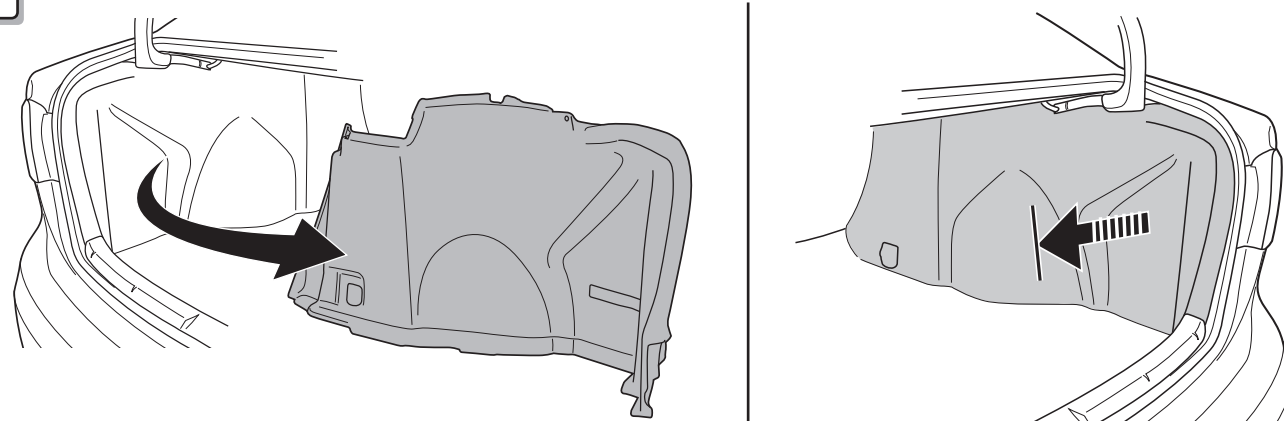
SEDAN & WAGON

4



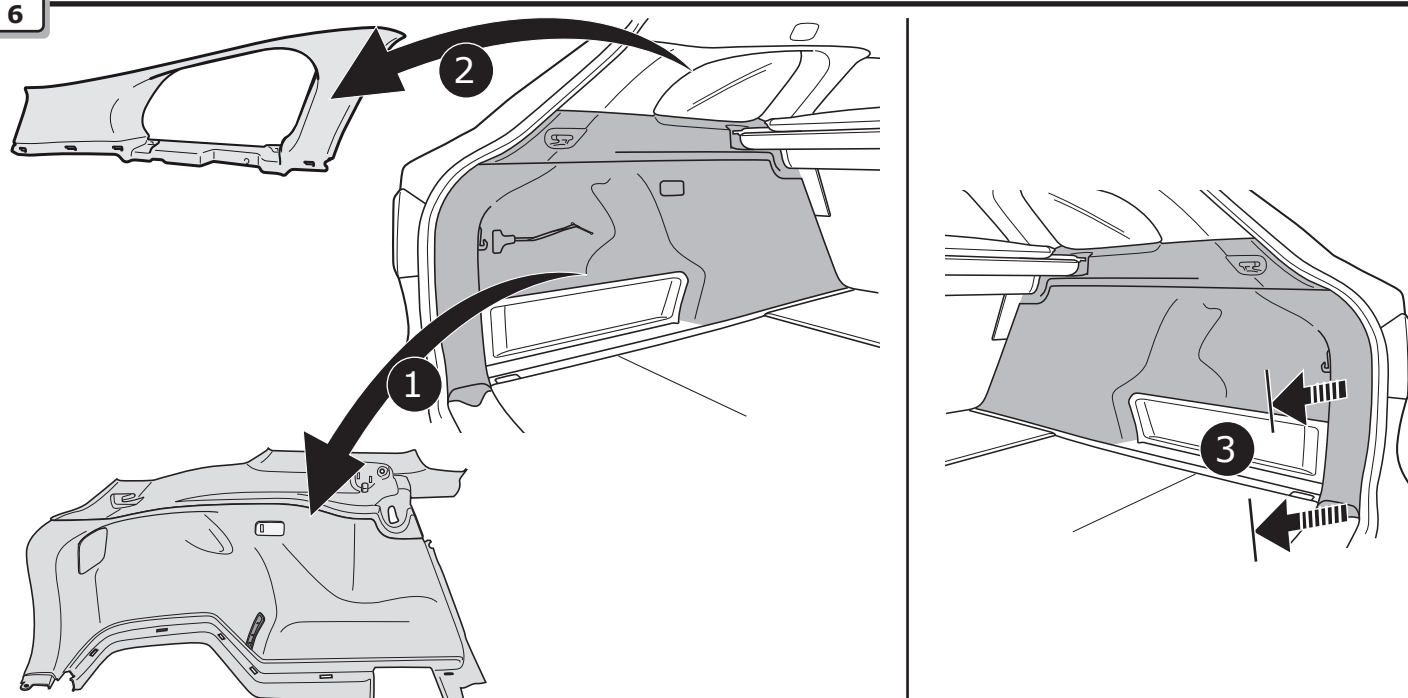
SEDAN

5

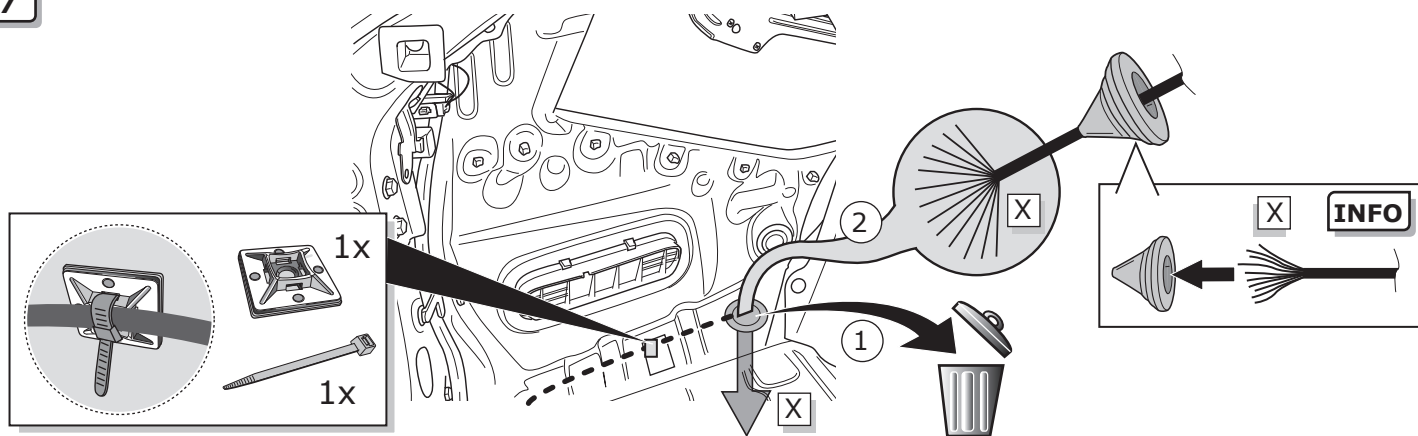


WAGON

6

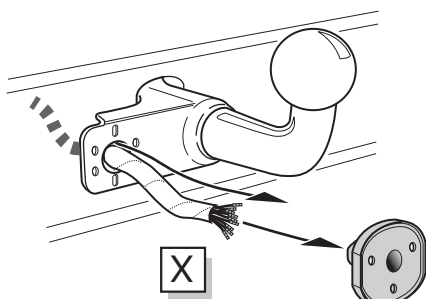


7

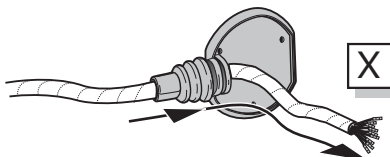


A

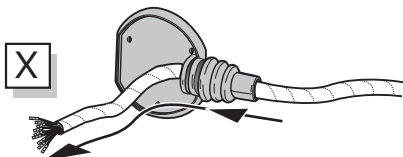
Option 1



Option 2



Option 3



INFO

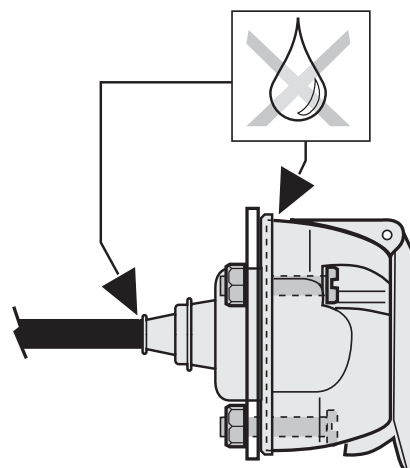
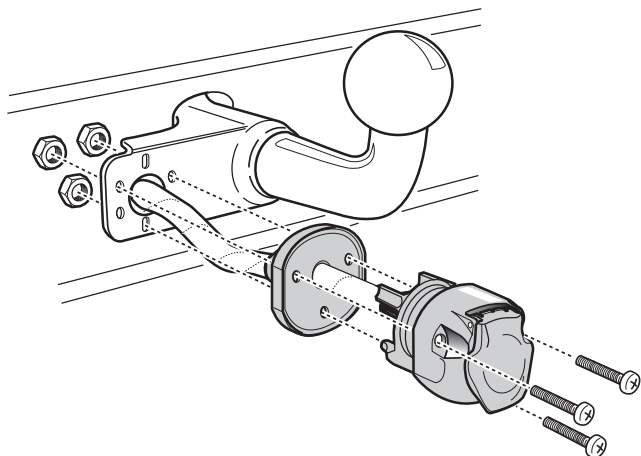
SOCKET CONNECTION



Pag. 13

B

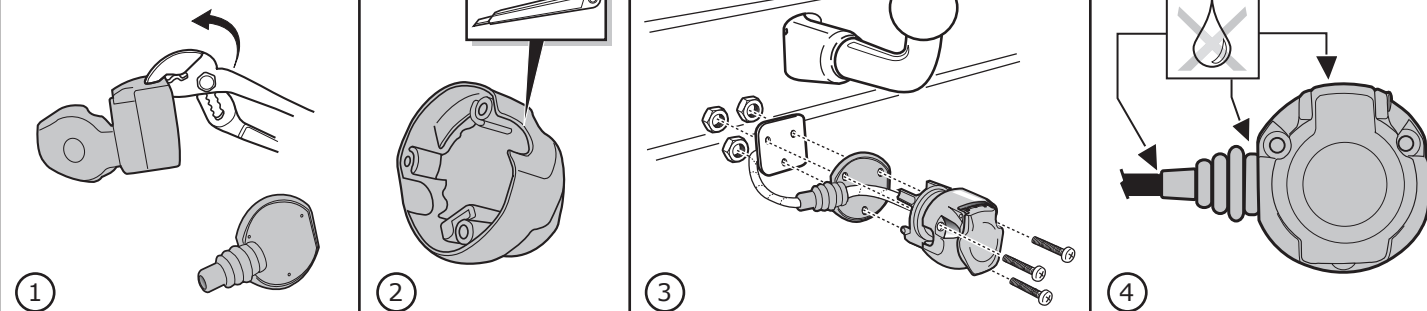
Option 1



SEDAN & WAGON

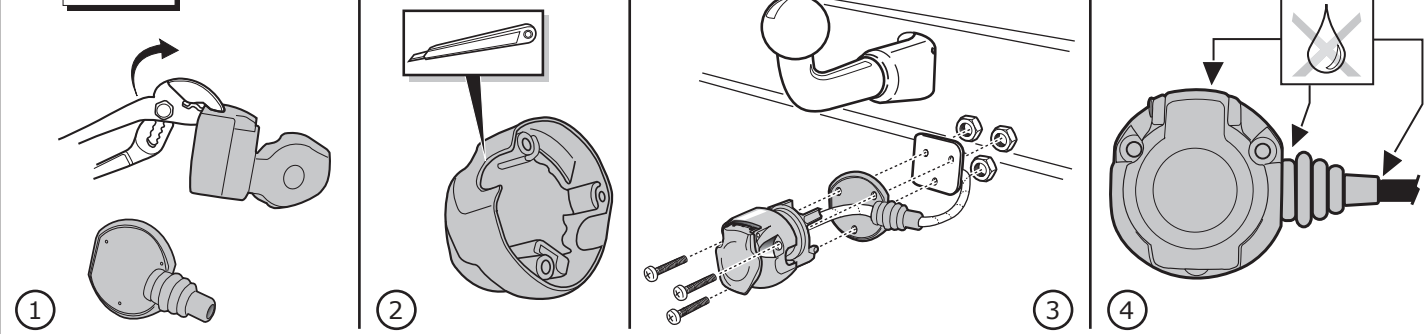
C

Option 2

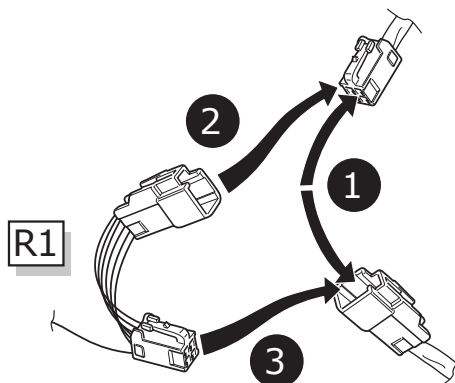
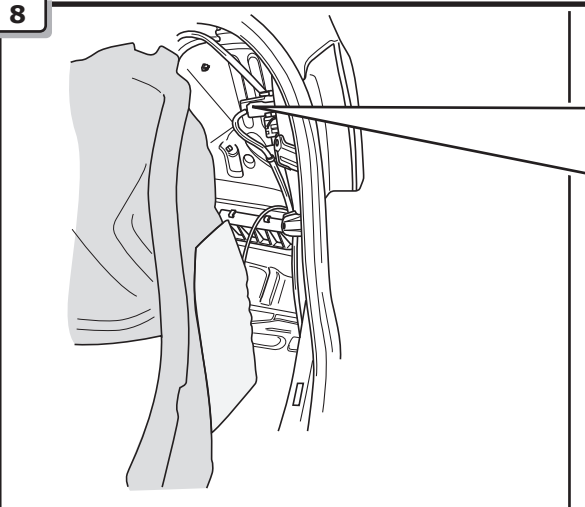


D

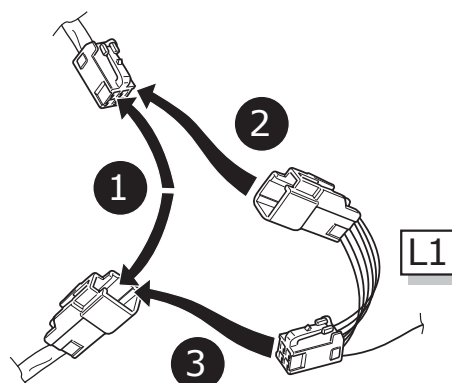
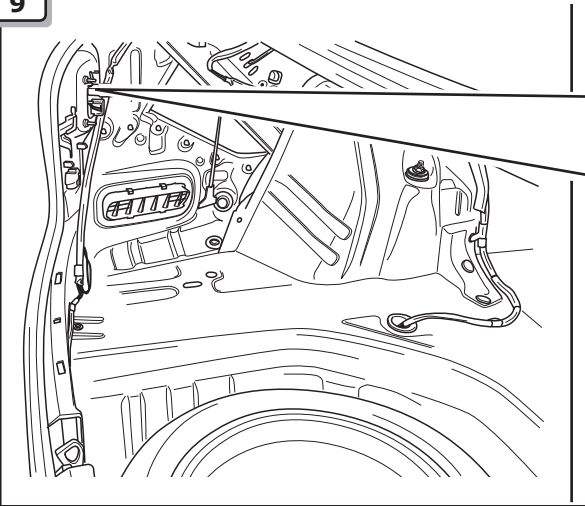
Option 3



8

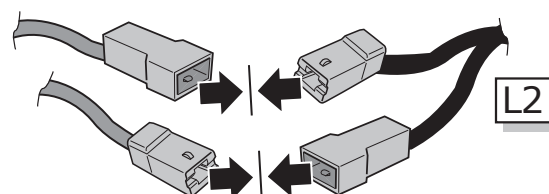
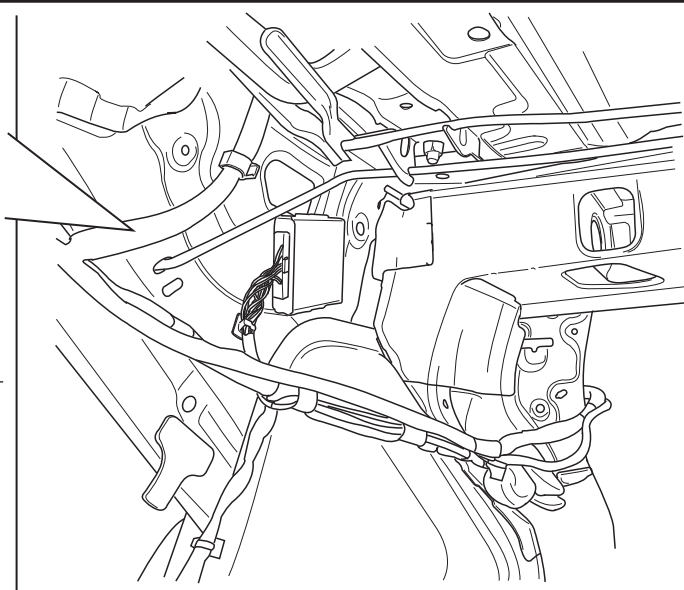
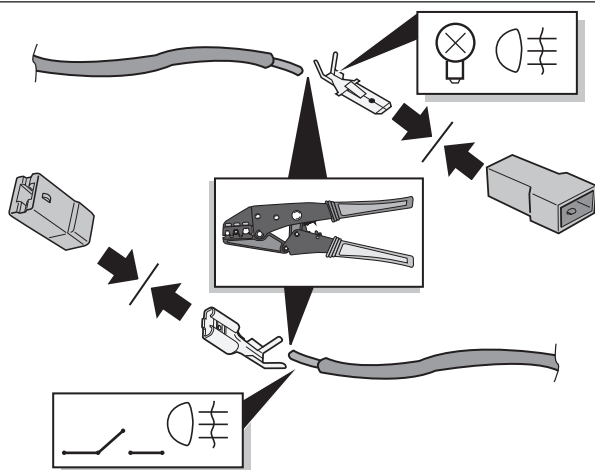
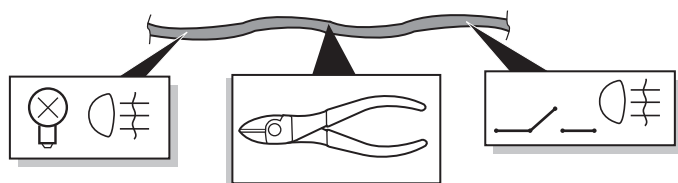
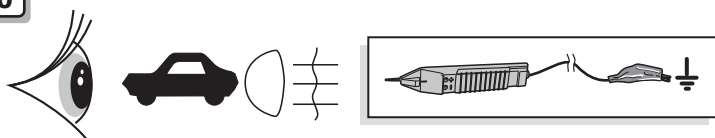


9



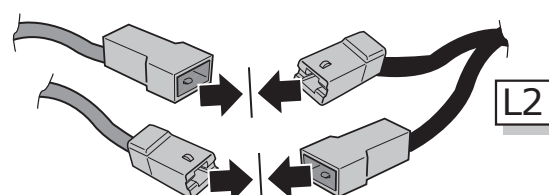
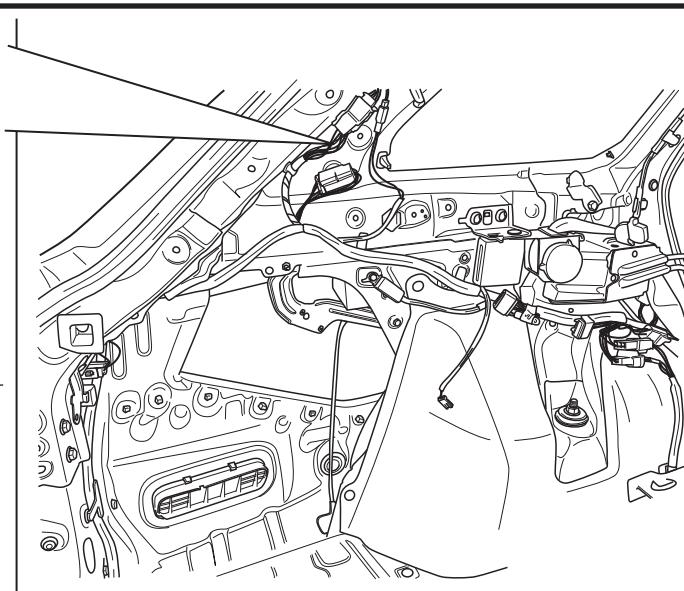
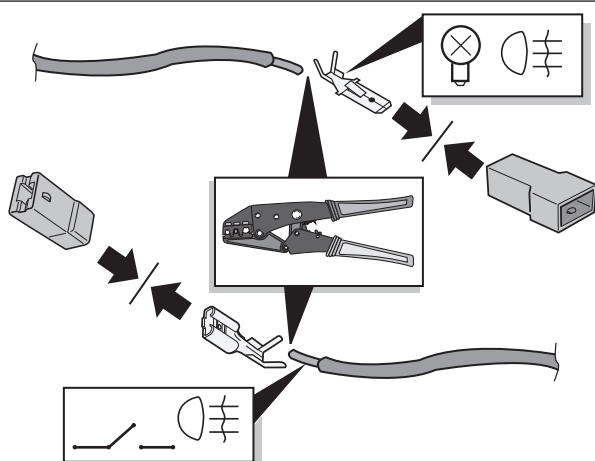
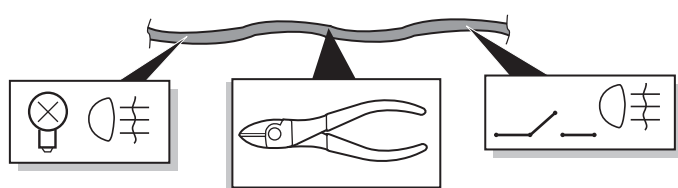
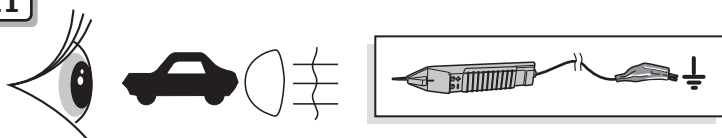
SEDAN

10



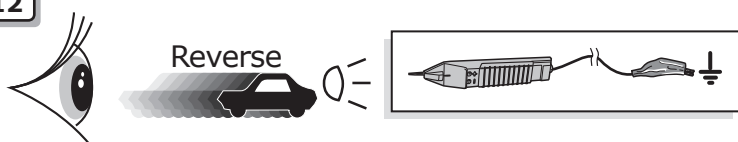
WAGON

11

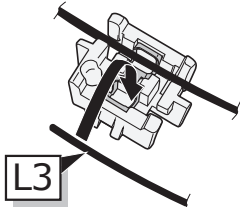


SEDAN

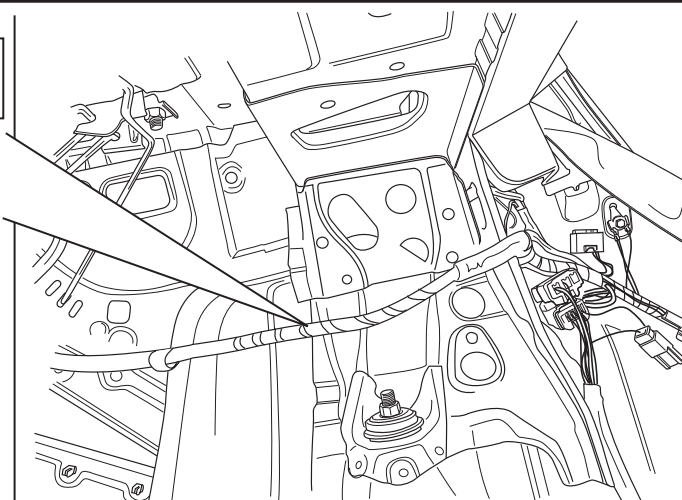
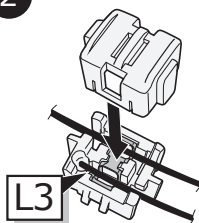
12



1

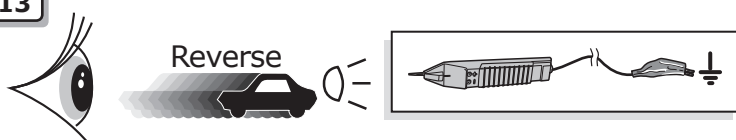


2

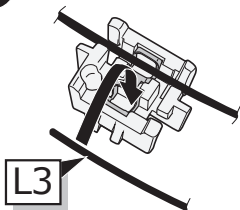


WAGON

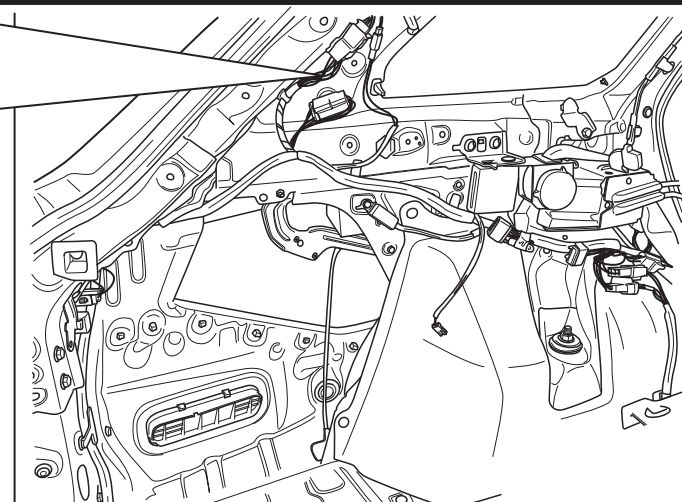
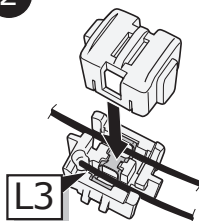
13



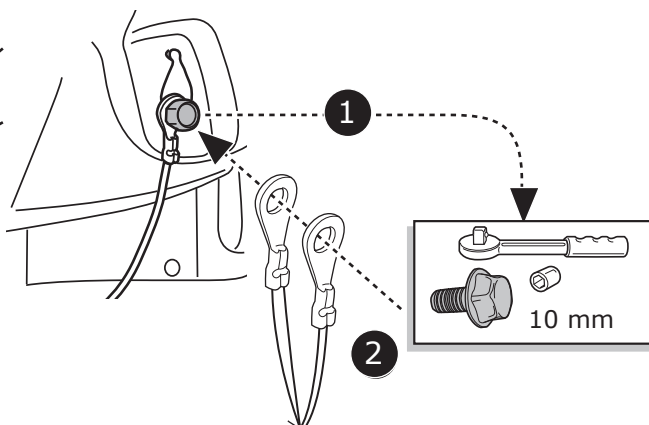
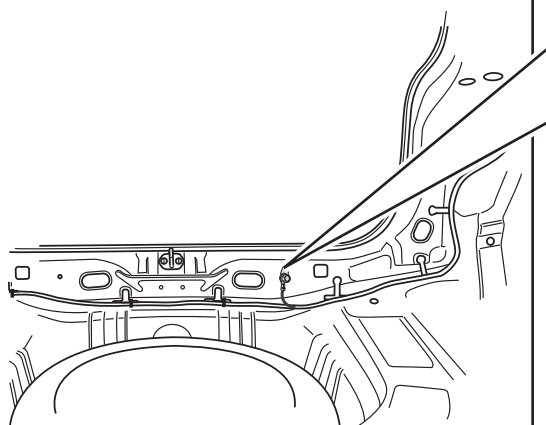
1



2

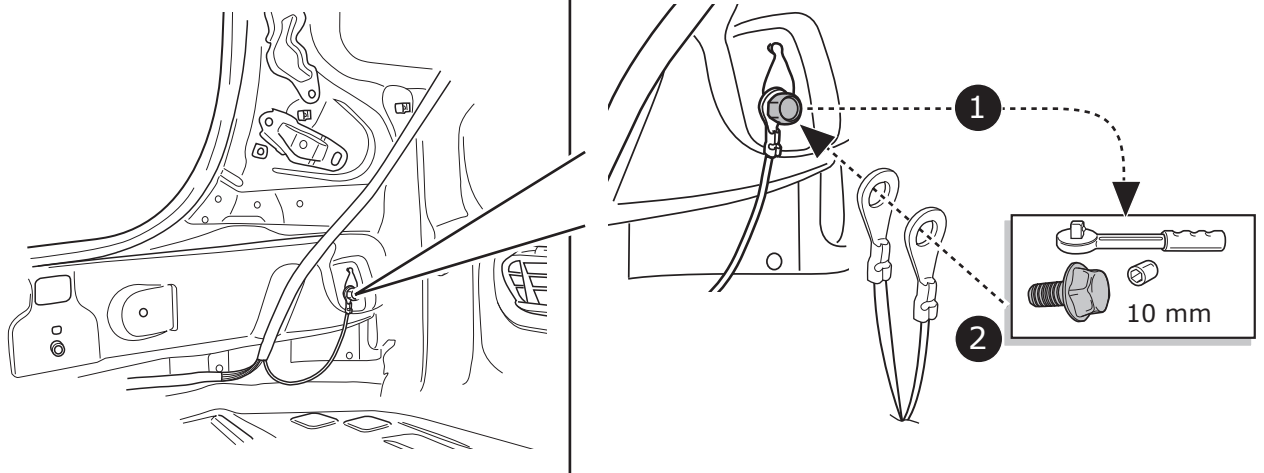


14



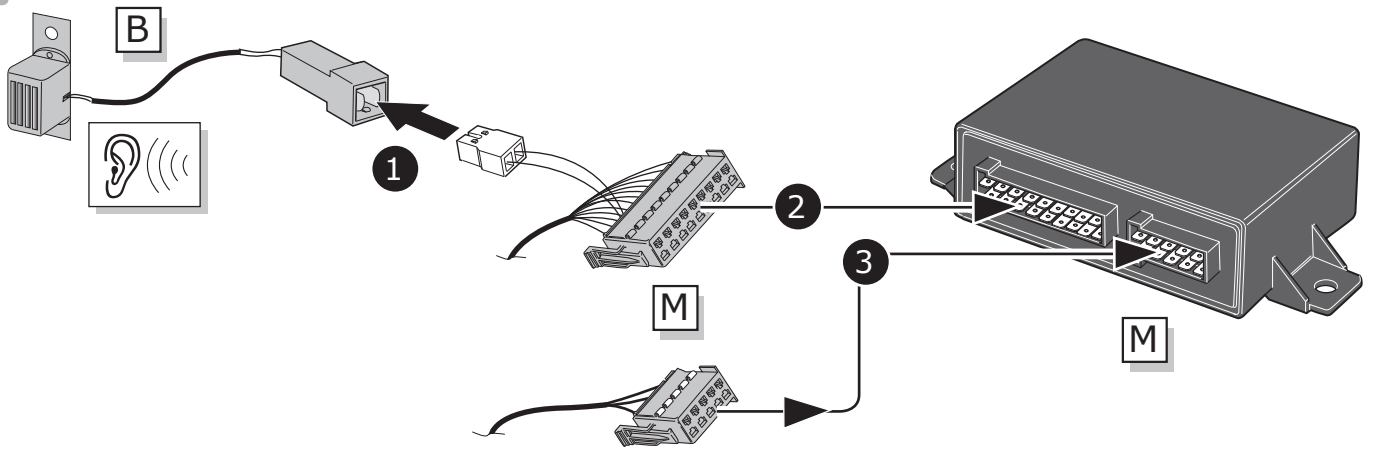
SEDAN

15

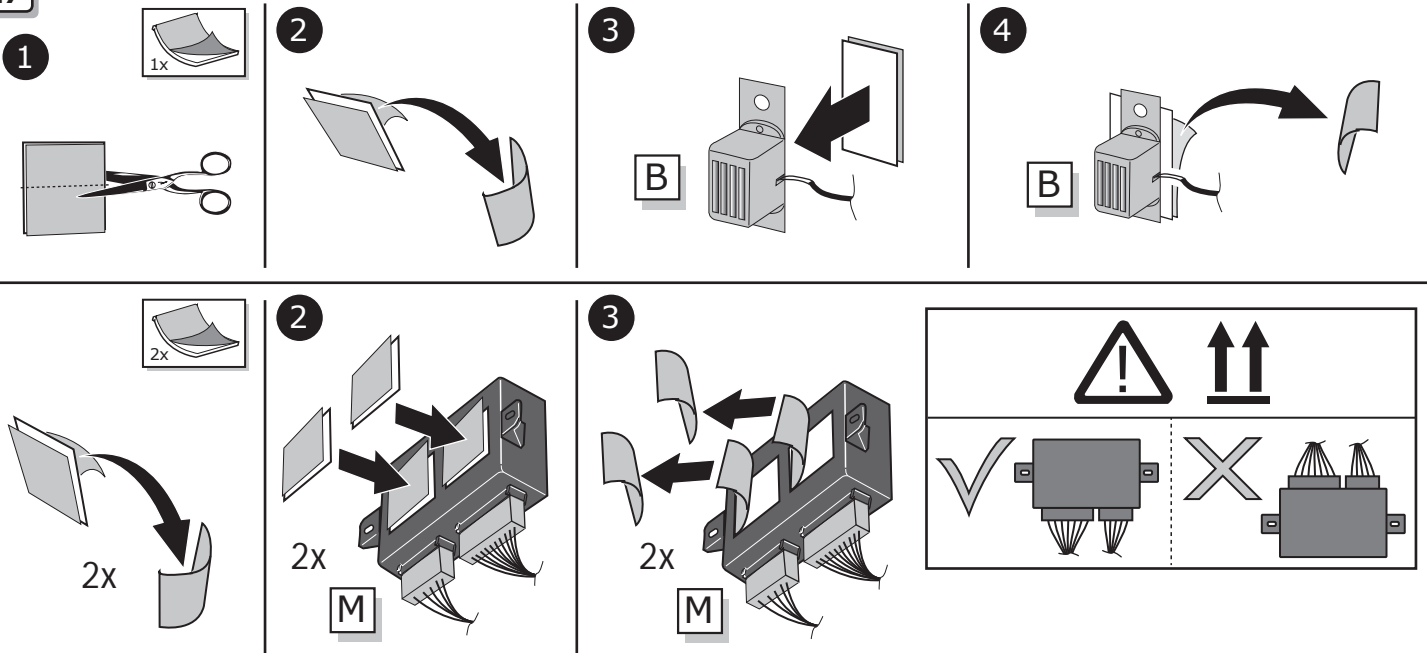


SEDAN & WAGON

16

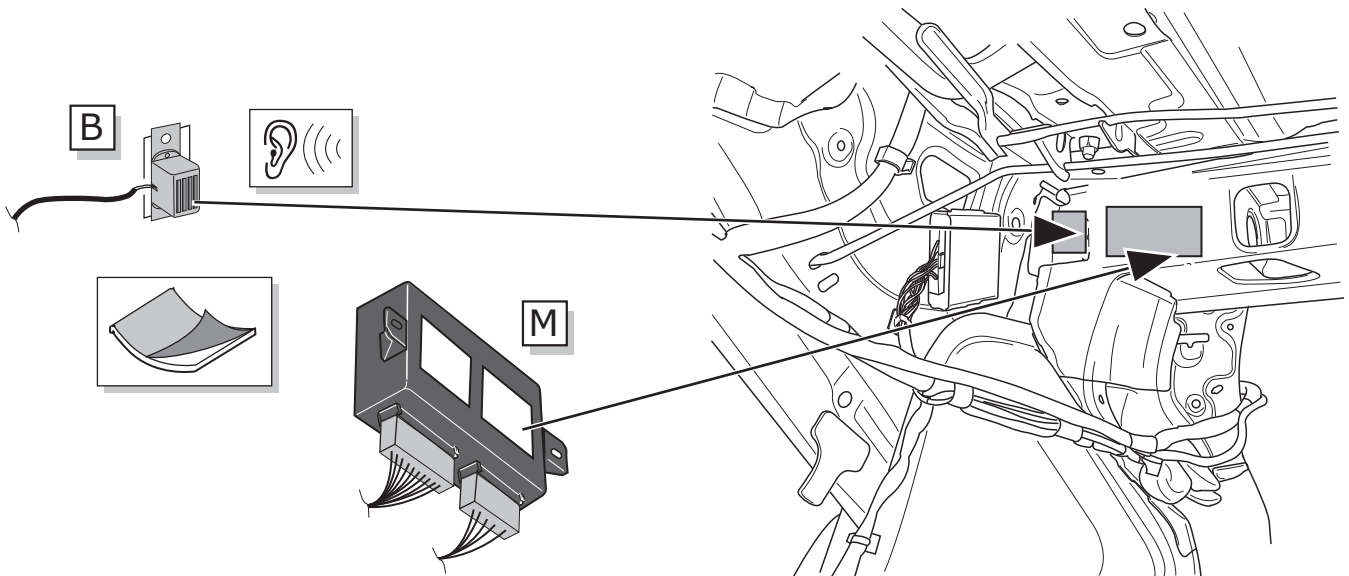


17



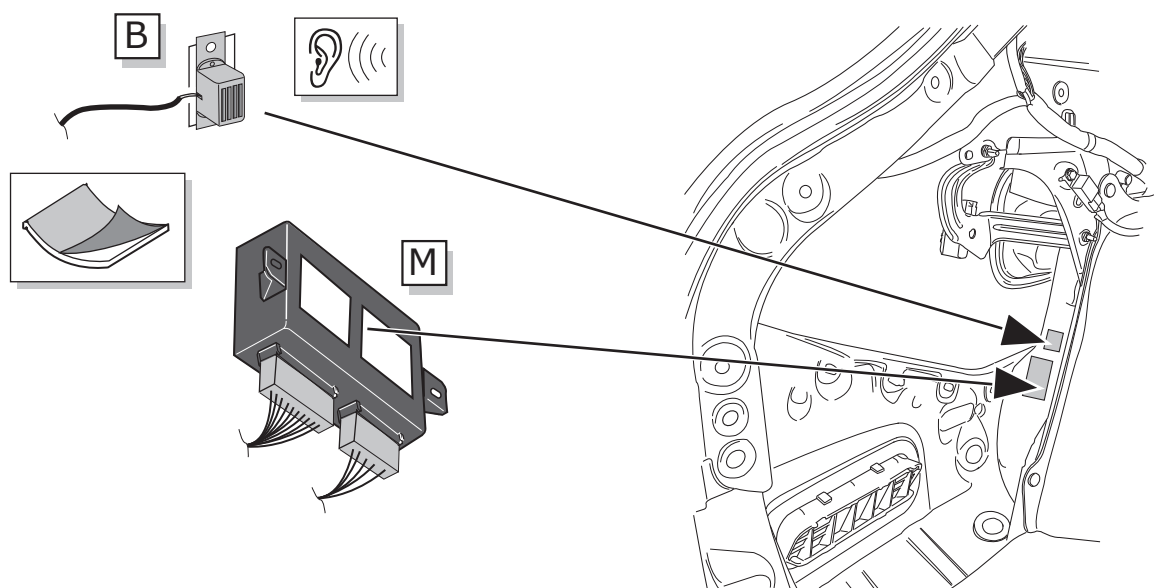
SEDAN

18

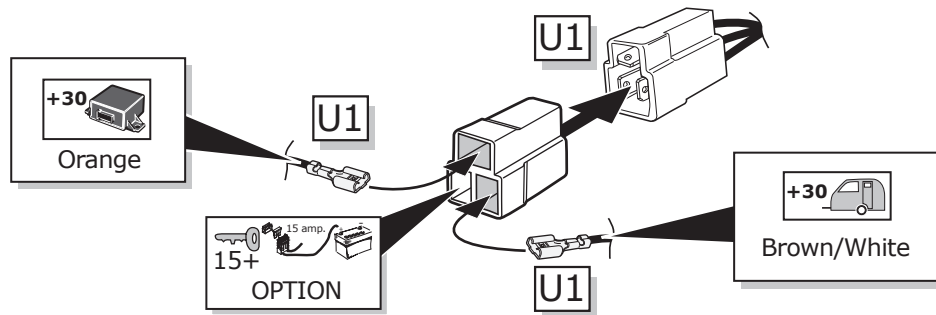


WAGON

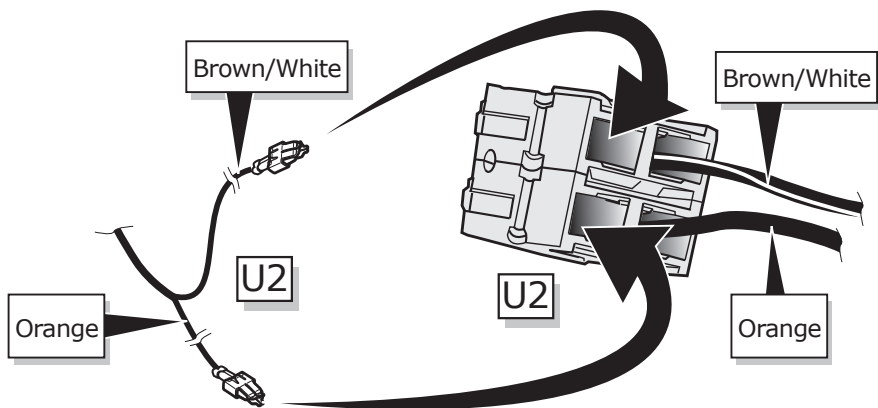
19



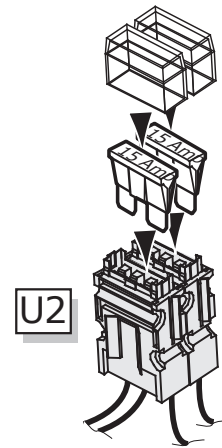
20



1

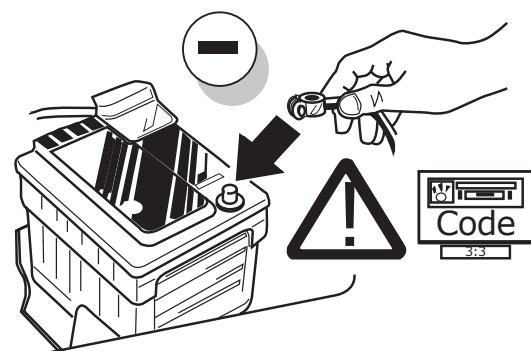
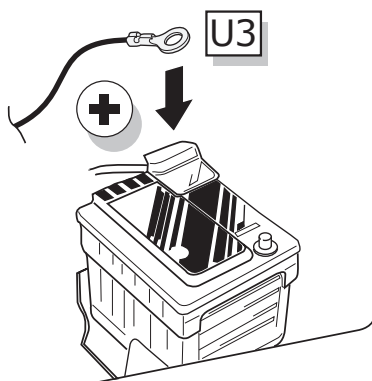


2



2

21



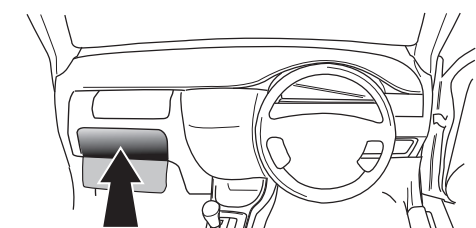
22

TEST ALL THE CIRCUITS WITH A TEST DEVICE WITH THE CORRECT POWER LOAD FOR EACH FUNCTION. A TEST DEVICE WITH LED'S CANNOT BE USED FOR THIS PURPOSE.

INFO

REINSTALL TRIM.

23



User guide



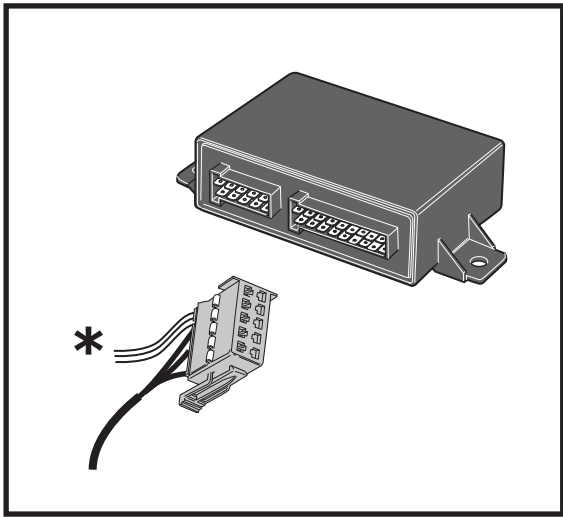
**00800
22 55 23 27
CALL2ECS**

Monday - Friday
08.00am - 11.00am
12.00am - 05.00pm GMT
customer@ecs-electronics.com
www.ecs-electronicsuk.co.uk

INFO

SOCKET CONNECTION

| DIN/ISO 11446 | ← | ⚡ | 1-8 | → | ☀ | STOP | ☀ | Reverse | 30+ 15mm | 15+ 15mm | 10 | — | 9 |
|------------------|--------|-------|-------|-------|--------|-----------------------------|--------|---------------|-----------------|-----------------------------|-------|----|-------|
| | 1/L | 2 | 3/31 | 4/R | 5/58-R | 6/54 | 7/58-L | 8 | 9 | 10 | 11 | 12 | 13 |
| Pmax | 21W | 2x21W | | 21W | 52W | 3x21W | 52W | 2x21W | 180W/15Amp | 180W/15Amp | | | |
| Colour | Yellow | Blue | White | Green | Brown | Red 1,00 mm ² | Black | Black/ Red | Brown/ White | Red 2,50 mm ² | White | - | White |



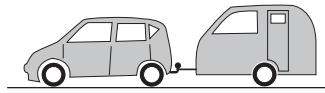
Option



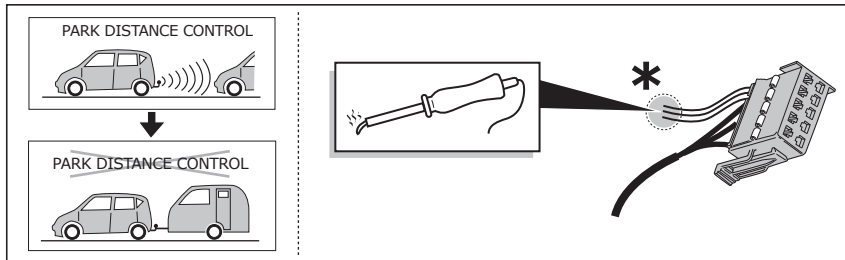
PARK DISTANCE CONTROL



PARK DISTANCE CONTROL

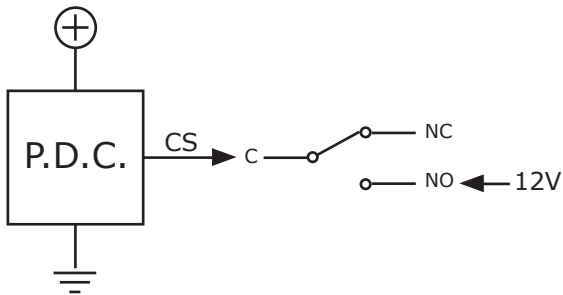


A

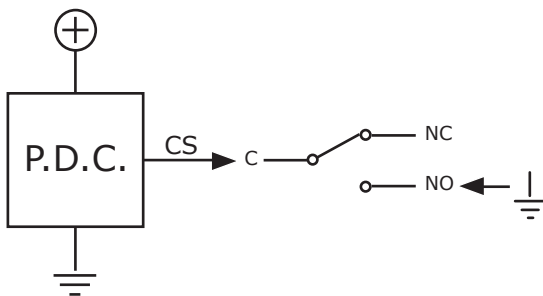


B

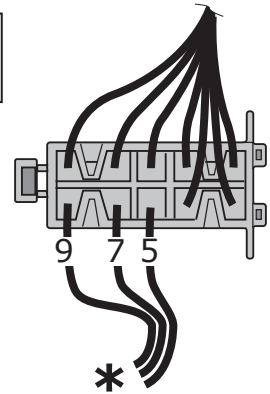
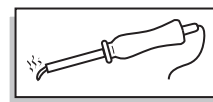
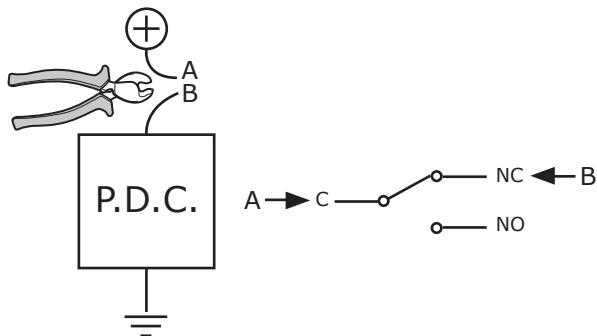
Option A



Option B



Option C



9 = C

Red/Black

7 = NC

Blue/Black

5 = NO

Blue/White