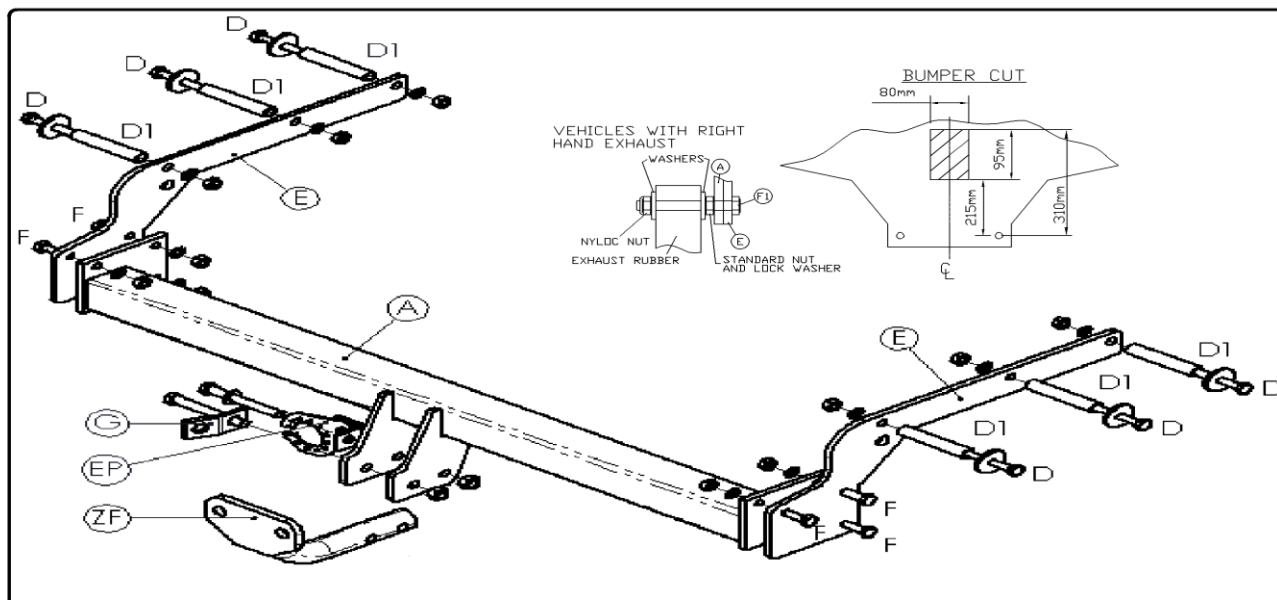


# FITTING INSTRUCTIONS FORD MONDEO ESTATE (2001-) TFO147 101063



## MATERIALS

A	1	Cross Bar
D	6	M10 x 130 x 1.5mm Bolts, Nuts, Lock Washers and Flat Washers (40mm O.D.)
D1	6	Bushes (17mm O.D. – 94mm long)
E	2	Side Arms
F	6	M10 x 30 x 1.5mm Bolts, Nuts and Lock Washers
F1	1	M10 x 90 x 1.5mm Bolt, Nyloc Nut and 2 Flat Washers (30mm O.D.) –vehicles with right hand exhaust.
G	1	Safety Chain Plate
EP	1	Electrical plate (Z99) and Angle Bracket (ZEQ5)



## FITTING

1. Remove lower bumper fixings and cut bumper as shown below. Temporarily lower the exhaust and remove the heat shield for access. Locate the six holes provided in the frame for Bolts (D) and remove mastic compound to ensure correct seating. Insert Bushes (D1) into the frame (using Bolts (D) as a guide) and ensure that they move across the 'keyhole' to grip the frame correctly. Loosely attach Side Arms (E). (Note: On vehicles fitted with right hand exhaust, drill out 3 rivets holding right hand exhaust hanger and remove).
2. Slide Cross Bar (A) up into bumper and loosely attach to Side Arms (E) using Bolts (F). (Note: On vehicles with right hand exhaust use Bolt (F1) in place of lower right hand Bolt (F) and assemble as shown below, tighten normal nut before hanging exhaust rubber on bolt then tighten nyloc nut until the washers are touching the rubber). Tighten all bolts.
3. Re-fit heat shield, exhaust and bumper fixings.
4. Attach chosen Neck (ZF or ZQ), Electrical Plate (EP) and Safety Chain Plate (G) to Cross Bar (A).
5. Fully Tighten all Bolts.

**Note:** This towbar must be used with a Class A50-1 or A50-X towball, which dimensionally conforms to A50-1 with a 'D' and 'S' value greater than or equal to that of the towbar.

**Recommended torque settings:** Grade 8.8 bolts: M8 - 24Nm, M10 - 52 Nm, M12 - 80 Nm, M14 - 130 Nm, M16 - 200 Nm  
Grade 10.9: M12 - 120Nm, M10 - 70Nm M8- 35Nm